

DUAL-SHEAR[®]
by **SSI**

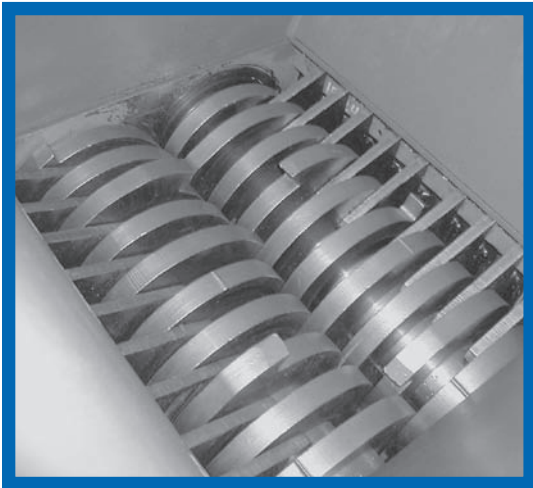
DUAL-SHEAR®

SHREDDERS FOR ALL APPLICATIONS

If you need a severe duty shredder able to process a wide range of materials including mixed materials with metal contamination, SSI's Dual-Shear® shredder is what you've been looking for. The shredder outputs "strips" that are the width of the cutters, usually 1" to 3" wide. SSI's robust design includes direct drive, "floating" cleaning fingers, patented ACLS™, and auto-reversing on material overload that enables processing of the most difficult materials without damage to the shredding unit.

WHY use a Dual-Shear®?

- Robust, high-torque shearing technology designed to process tough, compressible materials such as metals, carpet, tires, etc.
- Heavy-duty construction
- Low horsepower, energy efficient
- Wear-resistant cutters
- Shock protection
- Low-speed benefits—low noise, low dust, low heat generation, low operation and maintenance costs
- Minimum foundation requirements
- Bulk feed capability
- Minimal "fines" generation



SSI's Dual-Shear® shredders are the ideal solution for:

- **Alternative Fuel/Refuse-Derived Fuel** – MSW, industrial waste, wood, paper, tires, plastics, carpet, textiles, etc.
- **Product/Security Destruction** – Paper/documents, hard drives, off-spec or outdated goods, pharmaceuticals, electronics, plastic parts, etc.
- **Waste Treatment/Alternative Disposal** – Medical waste, radioactive materials, organics, paper fibers, MSW, industrial waste, etc.
- **Severe Applications** – Batteries, hazardous waste, etc.
- **Contaminated Materials** – Materials with diverse contamination.
- **Metal Materials** – Aluminum, ferrous, non-ferrous, metal turnings, steel drums.
- **Tires** – Passenger, truck, and OTR (off-the-road) tires.
- **Plastic** – Purgings, rolls and sheets, film, off-spec products, etc.

DUAL-SHEAR® models



M55

| | |
|-------------------------|---------------------------------|
| Cutting chamber (W x L) | 23" x 31" (580mm x 760mm) |
| Hopper opening (W x L) | 42" x 51" (1055mm x 1290mm) |
| Optional lengths | 25" or 40" (635mm or 1025mm) |
| HP Range | 30 - 40 (23-30kW) |
| Cutter thickness | 1" (25mm) |



M70

| | |
|-------------------------|---------------------------------|
| Cutting chamber (W x L) | 28" x 40" (700mm x 1015mm) |
| Hopper opening (W x L) | 55" x 70" (1400mm x 1700mm) |
| Optional lengths | 31" or 52" (785mm or 1020mm) |
| HP Range | 60 - 75 (45-56kW) |
| Cutter thickness | 1.5" (38mm) |



M85

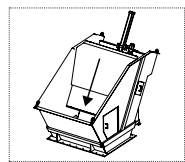
| | |
|-------------------------|----------------------------------|
| Cutting chamber (W x L) | 35" x 52" (890mm x 1315mm) |
| Hopper opening (W x L) | 59" x 67" (1500mm x 1710mm) |
| Optional lengths | 40" or 63" (1030mm or 1610mm) |
| HP range | 100 - 150 (75-113kW) |
| Cutter thickness | 2" (50mm) |



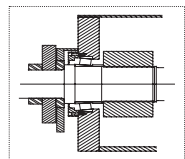
M100

| | |
|-------------------------|----------------------------------|
| Cutting chamber (W x L) | 41" x 63" (1065mm x 1600mm) |
| Hopper opening (W x L) | 62" x 88" (1580mm x 2225mm) |
| Optional lengths | 52" or 75" (1320mm or 1900mm) |
| HP range | 150 - 200 (113-150kW) |
| Cutter thickness | 2" (50mm) |

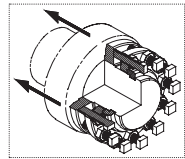
DESIGN features



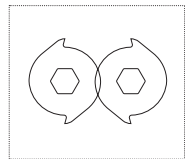
HOPPERS
Application-specific feed hoppers available, including patented ram feed assist.



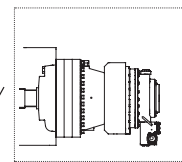
SEAL & BEARING PROTECTION
Proprietary "multiple-barrier" system, including a mix of conventional and labyrinth seals to prevent contamination.



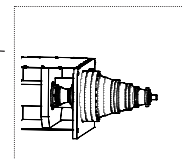
PATENTED ACLS™
SSI's "Advanced Cutter Locking System" maintains a tight cutter stack, minimizing maintenance requirements and prolonging cutter life.



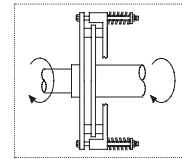
CUTTER CONFIGURATION
Application-specific cutter configurations.



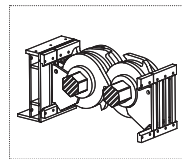
DRIVE CONFIGURATIONS
Electric, hydraulic and SmartDrive™ options available to suit specific needs.



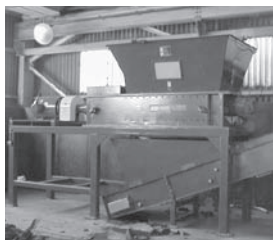
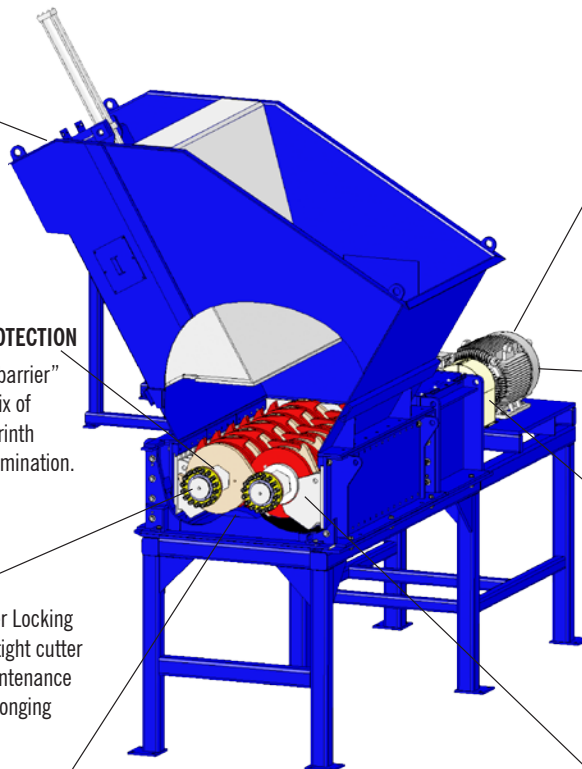
DIRECT DRIVE
Planetary gear boxes are splined directly into the drive shaft, amplifying torque and allowing greater flexibility of applications.



PATENTED SSP™
SSI's "Severe Shock Protection" system protects the drive system from damage during an event that instantaneously stops shredder shafts. (electric models only)



CLEANING FINGERS
Placed between each cutter and fitting closely around each spacer, the cleaning fingers keep shredded material from clogging the cutting chamber.



M120

Cutting chamber 45" x 60"
(1145mm x 1525mm)

Hopper opening 65" x 87"
(1650mm x 2210mm)

Optional lengths 52" or 75"
(1320mm or 1905mm)

HP range 150 - 300
(113-226kW)

Cutter thickness 2"
(50mm)



M140

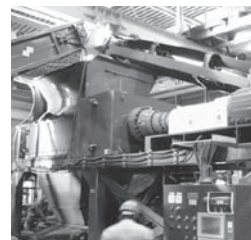
Cutting chamber 52" x 75"
(1320mm x 1905mm)

Hopper opening 69" x 96"
(1755mm x 2440mm)

Optional lengths 100"
(2540mm)

HP range 300 - 400
(226-300kW)

Cutter thickness 2"
(50mm)



M140D*

Cutting chamber 52" x 75"
(1320mm x 1905mm)

Hopper opening 69" x 96"
(1755mm x 2440mm)

Optional lengths 100"
(2540mm)

HP range 300 - 400
(226-300kW)

Cutter thickness 2"
(50mm)



M160D*

Cutting chamber 64" x 75"
(1625mm x 1905mm)

Hopper opening 96" x 144"
(2440mm x 3660mm)

Optional lengths 101"
(2555mm)

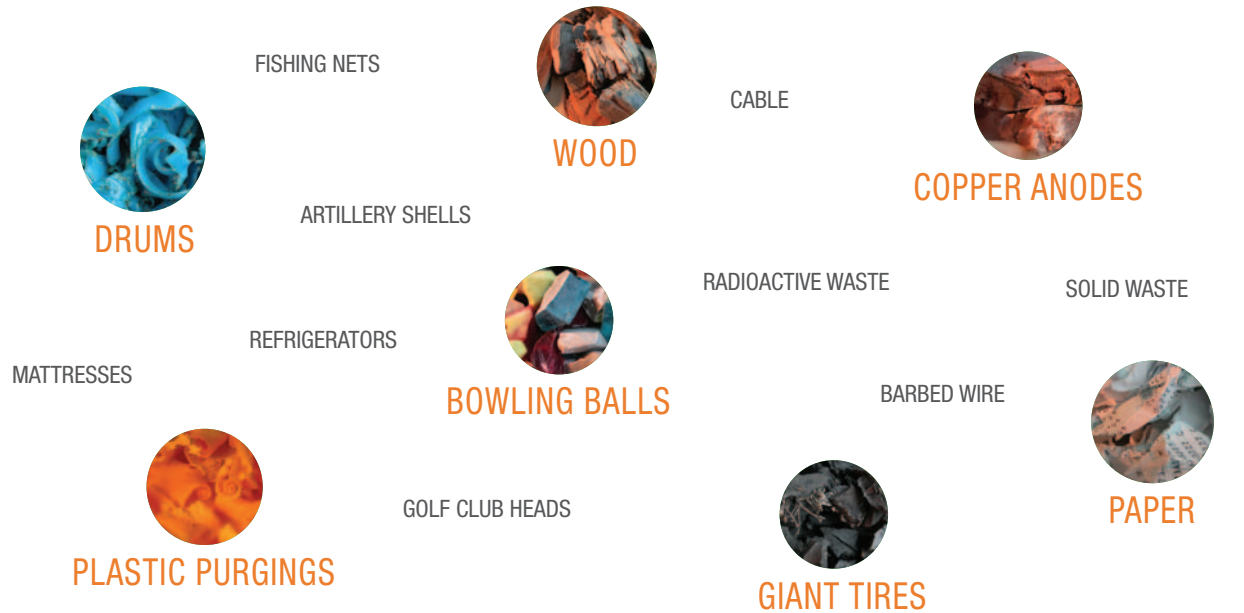
HP range 400 - 800
(300-600kW)

Cutter thickness 2"
(50mm)

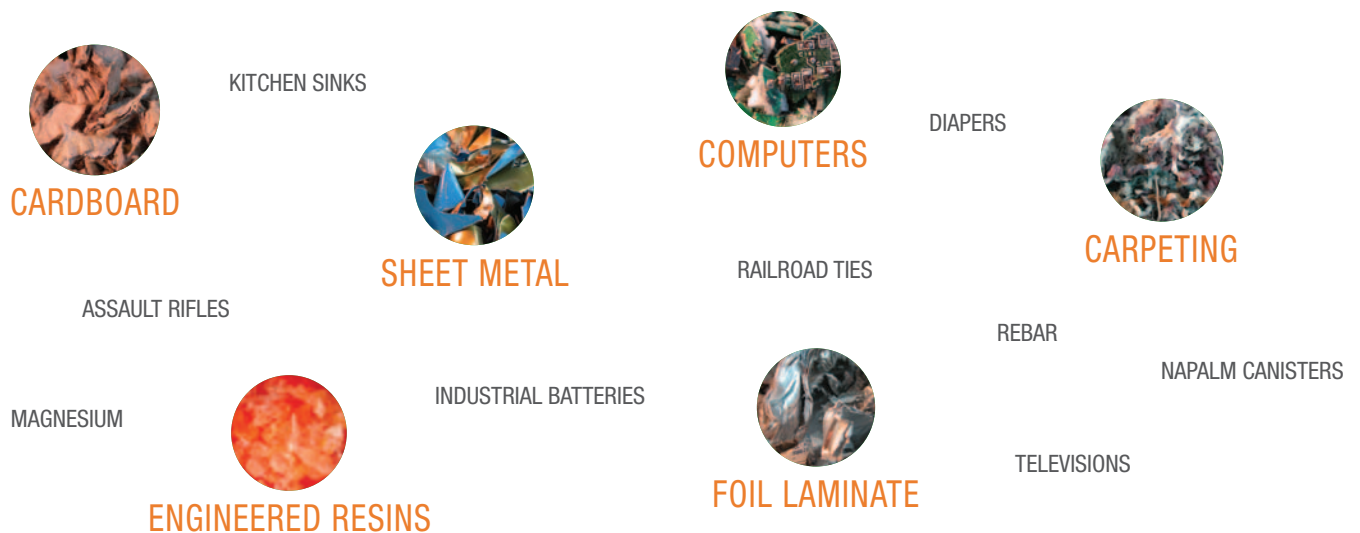
* The "D" denotes Dual Drive.

WHAT NEEDS SHREDDING?®

SSI Shredding Systems has provided effective solutions for a wide array of shredding applications from hazardous waste to tire shredding, from metals to plastic and from demolition debris to e-scrap. SSI's goal is to help you find the right solution to fit your goals and needs. When you contact us, here are some of the things we'll ask:



If you need to shred something and don't know if it's possible, call SSI to find out. In fact, you can send a sample to test shred.



SSI Shredding Systems, Inc.

Tel: (503) 682-3633 | www.ssiworld.com | sales@ssiworld.com

© Copyright 2013 SSI Shredding Systems, Inc. All rights reserved. Illustrations, specifications and descriptions presented reflect standard product at time of publication and are subject to change without notice. Dimensions are approximate. Photographs may include optional equipment and accessories.